

**AA UNDERWRITING
INSURANCE COMPANY
LIMITED**

**SOLVENCY AND
FINANCIAL CONDITION
REPORT AS AT
31 JANUARY 2026**

Table of contents

Contents	
1.	EXECUTIVE SUMMARY 3
1.1	Section A: Business and Performance..... 3
1.2	Section B: System of Governance..... 3
1.3	Section C: Risk Profile 4
1.4	Section D: Valuation for Solvency Purposes..... 4
1.5	Section E: Capital Management 4
A.	BUSINESS AND PERFORMANCE..... 5
A.1	Business Information..... 5
A.1.1	Company Details 5
A.1.2	Supervisory Authority 5
A.1.3	Auditors..... 5
A.1.4	Group Structure..... 5
A.1.5	Ultimate Shareholders 6
A.1.6	<i>Material Lines of Business & Geographical Areas</i> 7
A.1.7	Significant Business or Other Events..... 8
A.2	Underwriting Performance 8
A.3	Investment Performance10
A.4	Performance of Other Activities.....10
B.	Systems of Governance11
B.1	General Information11
B.1.1	Structure of the Board and Committees11
B.1.2	Key Functions.....12
B.1.3	Risk Management Function.....12
B.1.4	Compliance Function.....12
B.1.5	Actuarial Function.....12
B.1.6	Internal Audit.....13
B.1.7	Finance13
B.1.8	Claims.....13
B.1.9	Underwriting13
B.1.10	Main Changes during the Period13
B.1.11	Remuneration.....13
B.1.12	Material Transactions13
B.1.13	Adequacy of Systems of Governance.....14
B.2	Fit and Proper Requirements14
B.2.1	Skills, Knowledge and Expertise of Board Members and Key Function Holders 14
B.2.2	Fit and Proper Requirement and Process 14
B.3	Risk Management System including Own Risk and Solvency Assessment 14
B.3.1	Risk Management System Overview 14
B.3.2	Other Key Roles 17
B.3.3	Identification, Measurement, Monitoring, Management and Reporting of Risks..... 17
B.3.4	<i>Own Risk and Solvency Assessment</i> 17
B.4	Internal Control System..... 18
B.5	Internal Audit Function..... 18
B.6	Actuarial Function 18
B.7	Outsourcing 18
C.	Risk Profile..... 20
C.1	Underwriting Risk..... 21
C.1.1	Material Risks 21
C.1.2	Material Risk Concentrations 21
C.1.3	Risk Mitigations 21
C.1.4	Stress and Sensitivity Testing 21
C.2	Market Risk..... 22
C.2.1	Material Risks 22
C.2.2	Material Risk Concentrations 22
C.2.3	Risk Mitigations 22
C.2.4	Prudent Person Principle 22
C.2.5	Stress and Sensitivity Testing 22
C.3	Credit Risk..... 22
C.3.1	Material Risks 22
C.3.2	Material Risk Concentrations 23
C.3.3	Risk Mitigations 23
C.3.4	Stress and Sensitivity Testing 23
C.4	Liquidity Risk..... 23
C.4.1	Material Risks 23
C.4.2	Material Risk Concentrations 23
C.4.3	Risk Mitigations 24
C.4.4	Stress and Sensitivity Testing 24
C.4.5	Expected Profit in Future Premiums. Error! Bookmark not defined.

C.5	Operational Risk	24	D.3.1	Reinsurance Payables	31
C.5.1	Material Risks	24	D.3.2	Payables (trade, not insurance).....	32
C.5.2	Material Risk Concentrations	24	D.3.3	Deferred Commission	32
C.5.3	Risk Mitigations	25	E.	Capital Management.....	33
C.5.4	Stress and Sensitivity Testing.....	25	E.1	Own Funds.....	33
C.6	Conduct Risk.....	25	E.1.1	Management of Own Funds.....	33
C.7	Other Material Risks	25	E.1.2	Description of Own Funds.....	33
D.	Valuation for Solvency Purposes.....	26	E.2	Solvency Capital Requirement and Minimum Capital Requirement.....	34
D.1	Assets.....	26	E.2.1	SCR and MCR	34
D.1.1	Investments	26	E.2.2	SCR by Risk Module	35
D.1.2	Insurance and Intermediaries Receivables.....	26	E.2.3	Simplifications	35
D.1.3	Deposits, Cash and Cash Equivalents	27	E.2.4	Inputs used to Calculate the MCR	35
D.1.4	Deferred Acquisition Costs	27	E.2.5	Changes over the Period	36
D.1.5	Trade Receivables	27	F.	Responsibility Statement	37
D.1.6	Other Assets	27	G.	Annual Quantitative Reporting Templates.....	38
D.2.	Technical Provisions.....	28			
D.2.1	Bases, Methods and Assumptions	28			
D.3	Other Liabilities	31			

1. EXECUTIVE SUMMARY

AA Underwriting Insurance Company Limited (AAUICL or ‘the Company’) launched in 2016 and continues to target profitable growth in its UK car and household insurance portfolio.

AAUICL and Automobile Association Insurance Services Limited (AAISL) are distinct and separate companies within the AA Ltd Group. AAUICL distributes through AA Ltd Group distribution arrangements, including AAISL. AAISL supports customers through a panel of insurers which includes AAUICL. Certain products may also involve third-party administration arrangements.

AAUICL is a strategic part of the Group’s operations - allowing AA Ltd Group to strengthen its insurance offering to the Group’s customers.

AAUICL utilises AA Ltd Group technology and data infrastructure, together with specialist group and third-party service providers, to support its data management, pricing, underwriting, fraud prevention and claims management activities.

AAUICL’s financial year runs from 1 February to 31 January. References to FY26 therefore relate to the period from 1 February 2025 to 31 January 2026.

This SFCR is compiled of five key sections summarised below:

1.1 Section A: Business and Performance

Section A sets out the legal structure of the underwriting entity, details the related parties that support its activities and evaluates the performance during the year.

Underwriting is focused on UK motor and home insurance business, each with multiple tiers. Good performance is reliant on the expertise of our underwriting, pricing and data teams – which aims to avoid anti-selection using precise data and sophisticated modelling techniques. Additionally, our claims handling company uses proactive processes to handle claims alongside market-leading systems to detect and reduce fraudulent claims.

During FY25, the UK motor market saw substantial rate softening following the significant rate increases observed in FY24. This was partly driven by a reduction in claims inflation and lower claims frequency across the market. Despite this softening, prices remained materially higher than those seen prior to the sharp increases in FY24. In contrast, the UK household market continued to harden in early FY25 before stabilising later in the year.

During FY26, market conditions for both motor and household lines saw further rate reductions. New business motor rates declined by approximately 15% over the year and are now around 25% below their peak in FY24. Similarly, UK household new business rates fell by approximately 15% year-on-year. Against this backdrop, AAUICL remained focused on achieving its written target loss ratios across both the motor and household portfolios through a strategy driven by data, improved risk selection and targeted footprint expansion.

1.2 Section B: System of Governance

Section B sets out the systems of governance used by the Board to control and oversee the Company. As the Company develops, the Board is delegating certain responsibilities to a number of committees and forums, with updates provided to the Board at each meeting. The Board Terms of Reference set out the matters reserved to the Board and the authority delegated to its committees.

AAUICL has an effective system of governance in place which is proportionate to the nature, scale and complexity of the business.

1.3 Section C: Risk Profile

The Board formally approves the risk appetite and has established a number of policies to define acceptable levels of risk, and guide day to day operations. Risk is evaluated across a range of areas, with the Audit Risk and Compliance Committee (ARCC) undertaking quarterly monitoring. Key risks are also reported to the AA Ltd Group, which provides additional oversight and guidance. In addition, the Board reviews the Own Risk and Solvency Assessment (ORSA) at least annually and refers to it throughout the year.

1.4 Section D: Valuation for Solvency Purposes

This section provides details of the year end solvency position and explains how the Solvency II balance sheet differs from the statutory accounts.

1.5 Section E: Capital Management

Solvency coverage is central to business planning and decision making. It is calculated quarterly as part of the Quantitative Reporting Template (QRT) submission with a revised annual position included within this report. Solvency is also incorporated into the budget which forms the basis for the ORSA, and on which key risks are stress tested. Additionally, each forecast and strategic initiative includes a separate solvency calculation to ensure a strong capital position at all times.

The Board aims to maintain minimum own funds to cover the Solvency Capital Requirement (SCR) plus a 25% management buffer. During 2025, we have observed a moderate drop in average premiums reflecting reductions in inflation which impact underwriting risk, operational risk and counterparty risk. Furthermore, our own funds have increased, reflecting the earned benefits of the risk in average premiums during 2024. This has resulted in a solvency ratio of 214%, which comfortably surpasses the target.

A. BUSINESS AND PERFORMANCE

A.1 Business Information

A.1.1 Company Details

AA Underwriting Insurance Company Limited
Unit 2/1 Waterport Place
Europort Road
Gibraltar
GX11 1AA

AAUICL is incorporated in Gibraltar and is a Company limited by shares.
Incorporation number 106606

Permitted to write the following insurance classes in the United Kingdom: 1 (Accident); 2 (Sickness); 3 (Land Vehicles); 8 (Fire & Natural Forces); 9 (Damage to Property); 10 (Motor Vehicle Liability); 13 (General Liability); 16 (Miscellaneous Financial Loss); 17 (Legal Expenses); 18 (Assistance).

A.1.2 Supervisory Authority

Gibraltar Financial Services Commission
P.O. Box 940
Suite 3, Ground Floor
Atlantic Suites
Europort Avenue
Gibraltar
GX11 1AA

A.1.3 Auditors

PricewaterhouseCoopers Limited
327 Main Street
Gibraltar
GX11 1AA

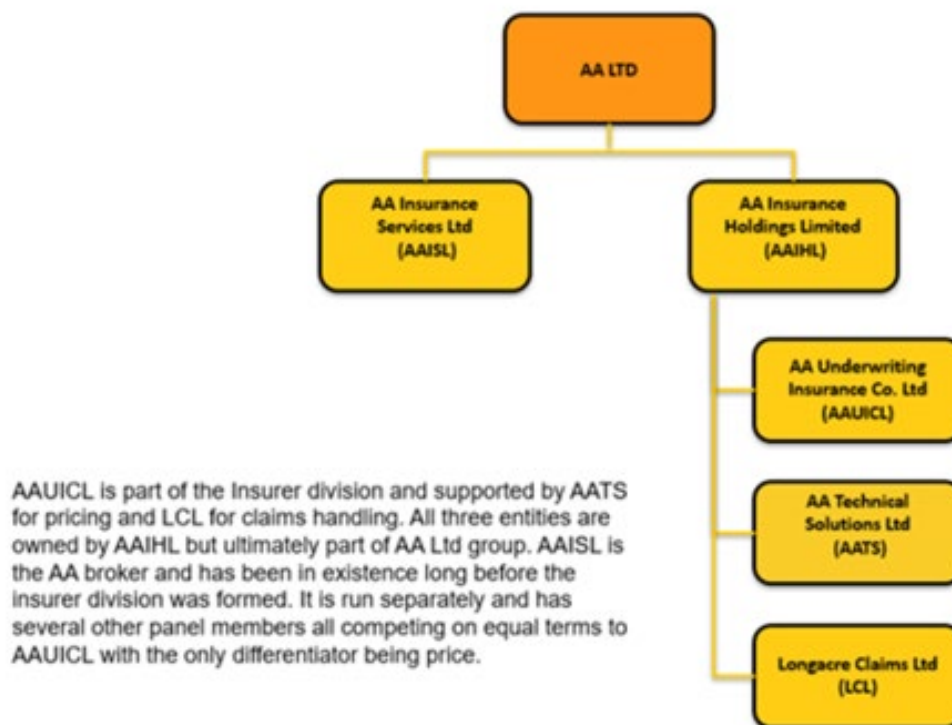
A.1.4 Group Structure

AA Insurance Holdings Limited (AAIHL) is a wholly owned subsidiary of AA Ltd Group, and in turn, wholly owns AAUICL. AAIHL also wholly owns AA Technical Solutions Limited (AATS) and Longacre Claims Limited (LCL) which act as service companies, providing pricing, underwriting and claims handling services respectively to AAUICL. Following a private acquisition, AA plc was delisted in March 2021 and the ultimate parent undertaking is Basing Consortium Co Limited, a joint venture between Towerbrook, Warburg Pincus & Stonepeak. AAUICL is incorporated in Gibraltar and is authorised and regulated by Gibraltar Financial Services Commission (GFSC).

AA Ltd Group, AAIHL, AATS and LCL are all UK companies.

An overview of the group structure is shown below:

ENTITY STRUCTURE



A.1.5 Ultimate Shareholders

Since 10 March 2021, the immediate parent company of the Company has been Basing Bidco Limited (Bidco). Bidco is a subsidiary of Basing Topco Limited (Topco), an investment company controlled by a consortium of (i) funds advised by TowerBrook Capital Partners (U.K.) LLP or its affiliates (TowerBrook); and (ii) private equity funds managed by Warburg Pincus LLC or its affiliates (Warburg Pincus). On 26 July 2024, Stonepeak Alpine Bidco Limited, an investment company acting on behalf of Stonepeak, a leading alternative infrastructure firm, became a minority shareholder of Topco.

A.1.6 *Material Lines of Business & Geographical Areas*

AAUICL's main business is UK motor insurance, complimented by a portfolio of private property (buildings and contents) household insurance. The following table shows the business by line of business for the year ended 31 January 2026, gross and net of quota share reinsurance. All business has been conducted in the UK under the extended transitional arrangements, which previously operated on a 'freedom of services' basis.

	As at 31 January 2026		As at 31 January 2025	
	Amount	% of Total	Amount	% of Total
	£'000	%	£'000	%
Gross written premiums				
Motor	238,883	84.0%	252,149	86.4%
Property	42,665	15.0%	38,543	13.2%
Other	2,690	1.0%	1,154	0.04%
Total	284,238	100%	291,846	100%
Net Written Premium				
Motor	40,040	79.2%	43,838	85.4%
Property	7,819	15.5%	6,341	12.4%
Other	2,690	5.3%	1,154	2.2%
Total	50,549	100%	51,333	100%

A.1.7 Significant Business or Other Events

During FY26, AAUICL completed important platform and product developments across both core portfolios. In motor, AA Ltd Group had launched a new set of tiered products via CDL in 2023. By 1 January 2026, all policies on the previous system had migrated onto the new products. In home, following the delivery of Insurer Hosted Pricing and new tiered products via CDL in FY25, the focus in FY26 was on the smooth migration of renewal business from the old systems to the new platform. The home product is now making greater use of the data and system capabilities available through the new platform and pricing model.

FY26 was also marked by competitive market conditions. AAUICL maintained underwriting discipline in both motor and home throughout FY26. Pricing continued to allow for claims inflation. In home, pricing also continued to reflect longer-term weather trends.

There were also wider developments affecting the business and risk profile. Since 16 July 2024, AAUICL has underwritten the Keycare portfolio. The portfolio generates approximately £2.7m of underwriting premium.

A.2 Underwriting Performance

AAUICL continues to focus on motor and household insurance as its principal underwriting activities in the UK. In addition, the Company underwrites a number of smaller ancillary portfolios that support wider AA operations, including After the Event (ATE) insurance linked to accident management services and KeyCare, which provides key insurance and assistance.

The Company manages underwriting volatility through a reinsurance structure that combines quota share, motor excess of loss and household catastrophe protection. In both motor and home, more than 80% of premium is ceded to quota share partners, supporting capital efficiency and reducing earnings volatility. For motor, excess of loss cover provides protection against large individual claims. For home, catastrophe reinsurance provides protection against severe weather and other major event losses.

Motor underwriting performance in FY26 was strong. Market rates reduced materially during the year, but AAUICL maintained underwriting discipline and achieved its modelled written target loss ratio. Motor trading performance was in line with plan overall, with in-force policy volumes increasing by 7% during FY26. Profitability benefited from motor loss ratio performance being better than expected, supported by favourable claims frequency trends and lower than anticipated claims severity inflation.

Household underwriting performance in FY26 was more mixed but remained controlled. Market conditions were challenging, with new business rates falling materially year on year. AAUICL continued to strengthen household rates during FY26 to bring the attritional loss ratio back towards target and also achieved its modelled written target loss ratio on written business. However, the FY26 accident year was affected by a subsidence event, which is expected to have an adverse impact on the earned loss ratio, although attritional claims frequency remained low and weather experience was otherwise relatively benign.

AAUICL prepares its financial statements in accordance with Generally Accepted Accounting Principles in Gibraltar (IFRS), and the underwriting performance information in this section is presented on an IFRS basis.

The following tables summarise the technical account performance for the year ended 31 January 2026 and the year ended 31 January 2025:

As at 31 January 2026					
	Motor Liability £'000	Other Motor £'000	Property £'000	Misc £'000	Total £'000
Gross written premiums	157,508	81,375	42,665	2,690	284,238
Outward reinsurance premiums	(131,475)	(67,368)	(34,846)	-	(233,689)
Net written premiums	26,033	14,007	7,819	2,690	50,549
Earned premiums, net of reinsurance	26,923	14,427	7,400	2,208	50,958
Claims incurred - gross amount	(116,024)	(59,668)	(36,444)	(2,170)	(214,306)
Claims incurred - reinsurers share	98,100	50,266	29,015	-	177,381
Claims incurred, net of reinsurance	(17,924)	(9,402)	(7,429)	(2,170)	(36,925)
Net technical income/ (expenses)	(5,399)	(5,527)	441	-	(10,485)
Balance on the technical account	3,600	(502)	412	38	3,548

As at 31 January 2025					
	Motor Liability £'000	Other Motor £'000	Property £'000	Misc £'000	Total £'000
Gross written premiums	163,482	88,667	38,543	1,154	291,846
Outward reinsurance premiums	(135,402)	(72,909)	(32,202)	-	(240,513)
Net written premiums	28,080	15,758	6,341	1,154	51,533
Earned premiums, net of reinsurance	27,262	15,287	5,658	275	48,482
Claims incurred - gross amount	(104,673)	(56,483)	(32,697)	(251)	(194,104)
Claims incurred - reinsurers share	84,870	45,699	24,520	-	155,089
Claims incurred, net of reinsurance	(19,803)	(10,784)	(8,177)	(251)	(39,015)
Net technical income/ (expenses)	(3,120)	(4,638)	798	-	(6,960)
Balance on the technical account	4,339	(135)	(1,721)	24	2,507

A.3 Investment Performance

The Company's investment portfolio and investment returns are outlined below. Returns on the bond portfolio were positive in FY26 and short-term Money Market Funds (MMFs) performed well.

	As at 31 January 2026		As at 31 January 2025	
	Amount £'000	% of Total %	Amount £'000	% of Total %
Investible Assets				
Bonds	14,122	12%	13,559	13%
Cash and Cash Equivalents	1,856	2%	1,479	2%
Collective Investments Undertaking	97,250	86%	85,555	85%
Total	113,228	100%	100,593	100%

Preservation of capital remains the Board's primary investment strategy objective. The bond portfolio continues to be managed by J Safra Sarasin (Gibraltar) (Safra bank) within strict parameters. Considering the volatile economic environment, investment risk was kept low during the year through limiting the size of the portfolio allocated to bonds.

	As at 31 January 2026		As at 31 January 2025	
	Amount £'000	% of Total %	Amount £'000	% of Total %
Investment Income				
Bonds	778	18%	539	15%
Cash and deposits	148	4%	79	2%
Collective Investments Undertakings	3,256	78%	3,078	83%
Total	4,182	100%	3,696	100%

A.4 Performance of Other Activities

A separate AA division manages non-fault accidents and AAUICL receives income from subrogation.

B. Systems of Governance

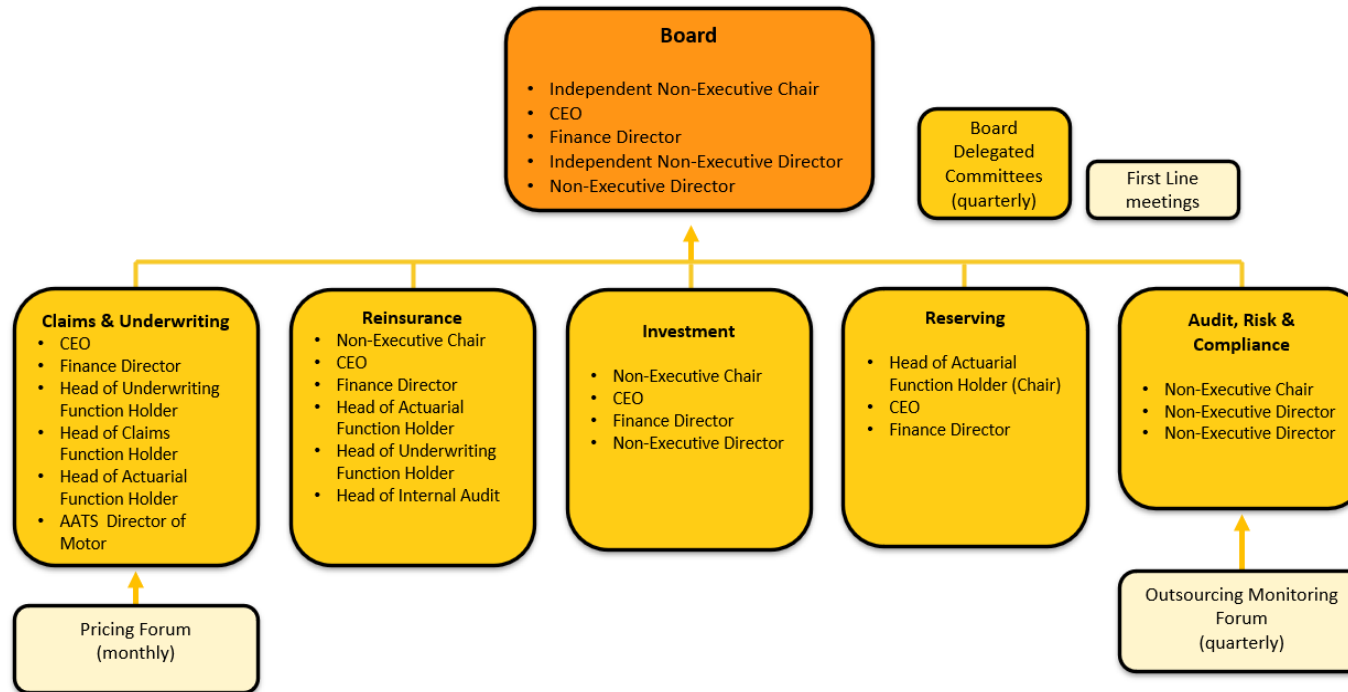
B.1 General Information

B.1.1 Structure of the Board and Committees

AAUICL operates via a Board and five Committees as set out below:

BOARD AND COMMITTEE STRUCTURE

Saved to this PC



AA

B.1.2 Key Functions

AAUICL has the following eight control functions in place, which is consistent with its obligations under Solvency II and the Corporate Governance requirements.

- Risk Management
- Compliance
- Actuarial
- Internal Audit
- Finance
- Claims
- Underwriting
- Chief Operating Officer

These functions are responsible for providing oversight and challenge to the business and providing assurance to the Board in relation to the AAUICL overall risk management and internal control framework.

B.1.3 Risk Management Function

The Risk Management Function is responsible for the day to day operation of AAUICL's risk management framework. The Risk Function Holder reports to the ARCC on a quarterly basis. The ARCC exercises oversight of the Risk Management Function pursuant to authority delegated by the Board of AAUICL.

B.1.4 Compliance Function

The Compliance Function forms an integral part of AAUICL's system of governance and is responsible for supporting the Company's compliance with all applicable regulations, rules and guidance, including relevant Gibraltar and UK requirements. The Compliance Function reports to the ARCC and the Board on any relevant developments in the legal and regulatory environment in which the Company operates.

The Compliance Function has authority to access all areas of the business and is entitled to unrestricted access to all information, records, property, personnel and activities necessary for the discharge of its responsibilities.

The ARCC considers and approves the compliance programme on an annual basis to ensure that all relevant areas are captured and receives the quarterly compliance reports. This is without prejudice to the independence of the Compliance Function in the discharge of its responsibilities.

B.1.5 Actuarial Function

The Actuarial Function has specific duties and responsibilities under Solvency II which include the following:

- Quarterly production of reserves for all business underwritten by AAUICL, in addition to production of IFRS 17 reserves and related disclosures for statutory reporting
- Production of the Solvency II Technical Provisions
- From H2 2024, the Standard Formula modelling has been performed in-house.

AAUICL outsourced the actuarial function services to Insight Risk Consulting (IRC) until 2022 when the function was brought in house with the hiring of a Head of Reserving who is also the Actuarial Function Holder. IRC continues to perform an independent annual external reserve review. AAUICL books the higher of the internal management estimate, or the independent review, with the current statutory position based on internal estimates. The calculation of the SII Technical Provisions was brought in-house in 2023, and Standard Formula modelling is also now performed internally.

B.1.6 Internal Audit

AAUICL's Internal Audit function is overseen by a Non-Executive Director of the Company. Internal Audit is responsible for evaluating the approach to risk management and governance, with emphasis on the internal control system.

AAUICL outsources the Internal Audit function to AA Ltd Group's internal audit team, who have the skills, knowledge and expertise to provide the services and are entirely independent from operational aspects of the business.

B.1.7 Finance

AAUICL's Finance function is overseen by a Director of the Company. Finance is responsible for providing the financial information that other business functions require to operate effectively and efficiently and to support business planning and decision-making. Furthermore, Finance is responsible for external financial and regulatory reporting.

B.1.8 Claims

AAUICL's Claims function is responsible for the efficient and fair processing of claims, in a timely and accurate manner and in accordance with contractual obligations.

AAUICL Claims function holder is Longacre Claims Ltd's Claims Director, who has the skills, knowledge and expertise to provide the services and is entirely independent from operational aspects of the business.

B.1.9 Underwriting

AAUICL's Underwriting function is responsible for evaluating and assessing the risks associated with insuring a particular person, property, or event. The function is responsible for determining the premium rates, policy terms and conditions, and coverage limits which will be offered to the customer.

AAUICL outsources the Underwriting function to a Head of Underwriting within AATS, who has the skills, knowledge and expertise to provide the services and is entirely independent from operational aspects of the business.

B.1.10 Main Changes during the Period

During the period, the following changes to the Board of Directors took place:

- Nicholas Hodgert, resigned as a Non-Executive Director on 8th April 2025
- Kevin Rye, resigned as a Non-Executive Director on 30th September 2025

All the above changes were approved and communicated to the GFSC.

B.1.11 Remuneration

Other than the Non-Executive Directors of the Company, AAUICL had nine employees covering CEO, Finance, Compliance and Risk. All employees receive remuneration based on skills, knowledge, experience, qualifications and role within the Company in the form of a fixed salary and associated benefits. A discretionary annual bonus scheme is in place which rewards based on both the performance of employee and AA Ltd Group. All our independent Non-Executive Directors receive a fixed monthly fee. The remuneration of Executive Directors and Officers of the Company is related to the performance of AAUICL under short and/or long-term incentive schemes. Due to the simplicity of the remuneration arrangements, AAUICL does not currently operate a separate Remuneration Committee - with responsibility for this area being retained by the Board. However, all remuneration arrangements are in line with AA Ltd Group requirements.

B.1.12 Material Transactions

During the year, AAUICL contracted for services from various companies within the Group. The value of these services during year was: AATS for policy administration fees £10.4m (2025: £9.4m) and LCL for claims handling fees £15.0m (2025: £15.9m).

As at 31 January 2026 AAUICL owed £4.9m (2025 - £2.2m) to AA Ltd Group companies in respect of policy administration and claims handling services.

B.1.13 Adequacy of Systems of Governance

AAUICL’s operations are relatively straightforward, and the Directors are actively involved in all key aspects of the business. The Company is focused on two main lines of business, with a single source of distribution and with known risks fully understood. The systems of governance have therefore been established appropriately to the size, nature and scale of AAUICL’s operations.

The Board is satisfied that appropriate systems of governance were in place during the reporting period. AAUICL reviews its systems of governance on a regular basis. In addition, governance falls within the remit of both internal and external audit, and the risk management function continuously assesses relevant legislation, guidance, advice and best practice to ensure that the systems of governance are always updated and maintained.

B.2 Fit and Proper Requirements

AAUICL ensures that Fit and Proper Requirements are applied to all individuals involved in the management of the business and all Function Holders have Statements of Responsibility in place.

B.2.1 Skills, Knowledge and Expertise of Board Members and Key Function Holders

AAUICL requires that members of the Board, Committees, and those individuals conducting other significant functions, are fit to conduct their roles, have the necessary skills, knowledge and experience and that all such individuals are of good repute and integrity. This ensures an appropriate variety of skills for managing the business.

B.2.2 Fit and Proper Requirement and Process

All Board members and Key Function Holders must annually demonstrate they are fit and proper to fulfil their roles. The Risk and Compliance Function monitors and reports on their fitness and propriety. Additionally, the Risk and Compliance Function ensures that appropriate Regulated Individual forms, including Statements of Responsibility (SoRs) are prepared for all individuals carrying out regulated functions for the Company and are submitted for regulatory approval.

B.3 Risk Management System including Own Risk and Solvency Assessment

B.3.1 Risk Management System Overview

AAUICL remains compliant with the requirements of the Solvency II directive, ensuring that the business is consistently managed with a risk-focussed manner. The risk management policy aims to identify all material risks, minimise risks wherever possible and control significant risks within acceptable parameters. The primary objective is to safeguard the policyholders, both now and in the future while supporting the Company in achieving its strategic goals.

A summary of the risk management framework is outlined below

Risk culture and governance	<p>The processes and structures to demonstrate to the AAUICL Board that effective risk management, oversight and assurance is being undertaken for all key risks faced.</p> <p>AAUICL must:</p> <ul style="list-style-type: none"> • Ensure each Business area has documented accountabilities and responsibilities for Risk management, which are proportionate for the activities that those business areas undertake. • Have a code of conduct that sets out behavioural expectations for all staff to support a positive risk culture.
-----------------------------	--

<p>Strategy and objectives</p>	<p>The process to ensure that risk is considered as part of strategy and objectives, including the direction it sets for taking, avoiding and considering opportunity from risk.</p> <p>AAUICL must:</p> <ul style="list-style-type: none"> • Identify and discuss key risks at the highest level within the strategic planning process and document them in a risk register or /and Emerging risk log. • Ensure Project / Programme activities have consideration to Risk Management within their process, for example risk and issues logs. • Ensure, on at least an annual basis, each business area reviews, discusses and documents its Emerging and Horizon Risks in the Audit, Risk and Compliance Committee. • Ensure that risk appetite is considered in strategic decision making by ensuring adherence to the Group’s policies and procedures. Where this is not possible, and the risk exposure is outside of the Group’s risk appetite, AAUICL must follow the AA Group’s risk acceptance process.
<p>Risk identification and prioritisation</p>	<p>We have a risk taxonomy to ensure that our material risk exposures are identified, monitored, and managed.</p> <p>AAUICL must ensure:</p> <ul style="list-style-type: none"> • Risks are identified in key operational processes and important business services as well as considering regulatory and legislative expectations. (Key operational processes are the processes that have the biggest impact to our customers, our employees and the AA Ltd Group overall. Processes that underpin our important business services are also key processes.) • Key Risks to plan are identified and discussed at the highest level within the strategic planning process. This would include at least 3 times a year, reviewing the current top risks to ensure key risks linked to strategy are captured and monitored. • As an additional check, Risk Registers are reviewed by the AA Ltd Group at least every 6 months or at any material change in operational environment.
<p>Risk management and controls</p>	<p>A set of processes to review and assess the risk and control environment. Risks are assessed on an inherent (no controls), residual (with controls) and target basis to help senior management understand and manage their risk exposures.</p> <p>AAUICL follows the AA Ltd Group’s risk management framework and controls which is to:</p> <ul style="list-style-type: none"> • Have a defined process and frequency, including the assessment methodology, AAUICL will perform control self-assessments which are in a prescribed format set by the AA Ltd Group. • Ensure self-assessments take place on a quarterly basis as determined by Group Risk and Compliance through the Group’s RCSA process. Risk and control owners will be accountable for ensuring that all applicable controls are assessed in the AA Ltd Group Risk Management System. • Ensure Mitigating actions are in place for any controls rated amber, pink or red or any risks that are deemed outside of the Board’s risk appetite statements, have appropriate treatment plans and/ or follow formal governance to be risk accepted.

Risk reporting and communication	<p>The information and reporting in place to support senior management in discharging their risk management accountabilities effectively and to help them make informed, risk-based decisions.</p> <p>AAUICL must:</p> <ul style="list-style-type: none"> • Follow the correct escalation processes after the identification of risks outside of the Board’s stated appetite or for all risk events. • Provide accurate and up to date risk management information through the executive and Board level committees as requested, including the Group Executive Risk and Compliance Committee (ERCC). • At least 3 times a year report to the ERCC on current, emerging and horizon risks • Appoint a Head of Risk Function Holder (who must be approved by the GFSC).
----------------------------------	--

AAUICL adopts a “three lines of defence” methodology, as typically seen in corporate Enterprise Risk Management (ERM) frameworks.

The three lines of defence model can be summarised as follows:

- 1st Line of Defence – Operating Management
First line of defence: the business units that run the business, they are accountable for the day-to-day management of the AA, which includes identifying and managing their business areas risks.
- 2nd Line of Defence – Risk and Compliance

Second line of defence: the AAUIL Risk and Compliance function, they are accountable for providing oversight, challenge, and advice to the first line. The Risk and Compliance team is an independent function from the 1st line of defence. In addition, the Risk and Compliance Team is supported in providing assurance to AAUICL by the AA Ltd Group Enterprise Risk Management Team who provide additional assurance work for the whole AA Ltd Group (including AAUICL).

- 3rd Line of Defence - The AA Ltd Group's Internal Audit

The AA Ltd Group's Internal Audit, as the third line of defence, provides assurance to the business by performing independent reviews of the first and second lines of defence.

B.3.2 Other Key Roles

An independent external review of reserves will be undertaken at least once per annum (as part of the external reserving review) by Insight Risk Consulting (IRC). IRC will document their results and produce a detailed actuarial report which will be submitted to the Board.

B.3.3 Identification, Measurement, Monitoring, Management and Reporting of Risks

The AAUICL Board sets risk appetites to clarify the Board's broad willingness to accept risk in the pursuit of its strategic objectives and business plan and these are identified and recorded in a Risk Register. For each risk, the Board sets:

- Risk appetite – broad principle for acceptable exposure to risk.
- Risk threshold – limit up to which management is allowed to operate without further reference to the Board. When the risk threshold is breached, this must be flagged to the Board for further action.
- Risk limit – unacceptable level of risk at which severe action must be taken to return to within risk appetite.

B.3.4 Own Risk and Solvency Assessment

B.3.4.1 ORSA Process and Integration

AAUICL has established a policy setting out the requirement to carry out an Own Risk and Solvency Assessment (ORSA). The purpose of the policy is to ensure that all material risks faced by AAUICL are appropriately assessed and the level of capital required to manage these risks or other risk mitigation measures are determined and put in place. The ORSA provides the Board and the wider Group with a thorough understanding of the Company's risk profile. AAUICL conducts at least an annual ORSA after which a formal report is prepared, however the ORSA process is ongoing throughout the year.

The ORSA takes account of historic performance and future forecasts/budgets over the business planning horizon, which is a period of at least three years. Various members of the management team will contribute to the ORSA. The ARCC and ultimately the Board always maintain oversight and control, steering how the assessment is performed and challenging the results to ensure they properly take account of the Company's material risks.

B.3.4.2 Relationship between Solvency Needs, Risk Profile, Capital Management and Risk Management

The ORSA enables the Board to assess the Company's capital needs over the planning horizon. The ORSA is conducted taking due account of AAUICL's specific risk profile. This includes risks explicitly captured in the Standard Formula, as well as risks which are either not captured or not able to be mitigated through capital. A range of risks are considered in the ORSA process.

AAUICL's capital management policy has been established to ensure that the Company has in place the appropriate levels and quality of capital both as required by the SCR calculation and as determined by the ORSA. The policy aims to ensure that appropriate plans are in place to enable the Company to meet its capital requirements both in the immediate and the medium-term future and that all items of own funds comply with the relevant rules, regulations and legislation.

The risk management function takes due account of the available capital, the Company's risk profile, future business plans and the outcome of the ORSA in an iterative cycle.

B.4 Internal Control System

B.4.1 Internal Control System

AAUICL is committed to managing its business in a risk-focused manner. To achieve this, appropriate controls have been put in place to reduce risks where possible. Risk management and the adherence to the internal controls are an integral part of the business culture.

Responsibility for establishing an appropriate internal control environment rests with the Board and its Directors individually. Responsibility for adherence to internal controls rests with all individuals involved in the management of the business.

The internal control measures are targeted at ensuring that:

- Processes and procedures exist for the identification and assessment of risks;
- Appropriate processes and procedures are in place to control identified risks;
- Individuals involved in the business are trained and aware of their role regarding internal controls;
- Appropriate monitoring and review processes are in place.

Key controls that operate to mitigate risks are recorded in the Company's risk register. The internal control framework is subject to review by AAUICL's Internal Audit function.

B.5 Internal Audit Function

B.5.1 Implementation of the Internal Audit Function

Internal Audit is one of the outsourced services provided to AAUICL from AA Ltd Group, featuring as the 'third line of defence' as outlined in section B.3. Audit plans and underlying areas of focus are presented to the Board on an annual basis and discussed quarterly. The audit plan will typically focus on areas deemed to have a high inherent risk.

Ultimately, the Internal Audit Function will seek to evaluate the adequacy and effectiveness of business controls focusing on governance, underlying business operations, operational processes, and IT systems

B.5.2 Independence and Objectivity of the Internal Audit Function

The Internal Audit function is outsourced to AA Ltd Group who are a key stakeholder in AAUICL. The objective for AA Ltd Group is to ensure that AAUICL is being governed in a fit and proper way, is upholding the AA brand reputation both internally and externally, and to ensure the business controls are operating effectively.

Internal Audit operates as an independent function but is overseen by a Non-Executive Director who is kept informed of updates and who has the opportunity to challenge.

B.6 Actuarial Function

B.6.1 Implementation of the Actuarial Function

The role of the Actuarial Function is to provide the Board with an independent perspective on key insurance aspects of the Company's operations. This ensures that the Board is fully informed of matters that may impact the business.

The Actuarial Function reports its findings to the Reserving Committee on a quarterly basis covering all areas for which it is responsible. The report assists the Board in its decision-making process and identifies areas where improvements are required. The report also identifies any material uncertainty about data accuracy and explains the approach taken in light of this uncertainty.

B.7 Outsourcing

B.7.1 Outsourcing Policy

Outsourcing is defined as the contracting out of all or part of an internal process or internal activities to a third-party provider on a continuous basis.

Whilst AAUICL outsources certain key activities to intra-group service providers, the Company retains ultimate responsibility for any activity that is outsourced.

B.7.2 Outsourced Functions and Activities

The following table sets out the key functions outsourced by AAUICL:

Function/Services	Outsourced To	Jurisdiction
Policy administration	Intra - group (AAISL)	United Kingdom
Underwriting, pricing and processing including provision of management information	Intra - group (AATS)	United Kingdom
Claims handling, reserving and settlement	Intra -group (Longacre Claims Ltd)	United Kingdom
Investment Management	J Safra Sarasin Bank	Gibraltar
Company secretarial services	RSM	Gibraltar
Actuarial function services	Intra - group (AATS)	United Kingdom
Internal audit	Intra – group (AA Ltd)	United Kingdom
Complaints Handling	Intra – group (AAISL)	United Kingdom

Outsourced providers, whether part of the Group or external, are under ongoing oversight by the Company. In particular, the following controls and safeguards are in place:

- Outsourced services fall fully within the remit of the Internal Audit function and are therefore included in the internal audit programme in the same manner as if they were inhouse activities.
- AAUICL Directors and Key Function Holders are directly involved in all key areas of the business and therefore maintain continuous oversight.
- Periodic audits are carried out to ensure service standards are met.
- Formal outsourcing agreements are in place, which set out the responsibilities of each party.
- Material Group Outsourced functions are being monitored quarterly in the Outsourcing Monitoring Forum

C. Risk Profile

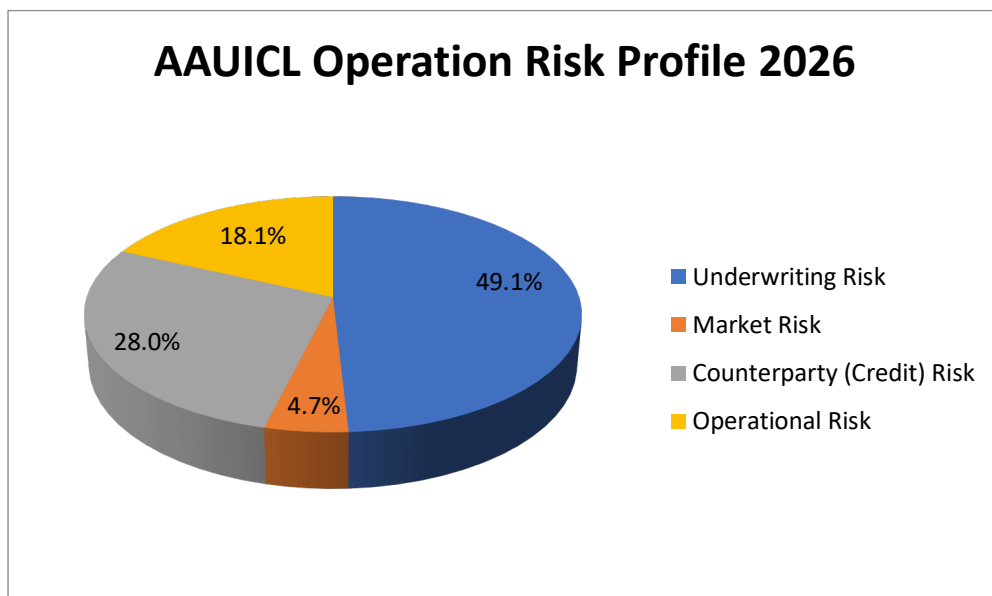
AAUICL’s governance framework sets out the type and level of risk which the Company is willing to accept in the achievement of its strategic objectives. This framework provides both qualitative and quantitative risk limits. The Company seeks to maintain low levels of risk, which is reflected in its reinsurance and co-insurance arrangements. Regarding investments, AAUICL pursues a strategy which is focussed on capital preservation, thus adopting a careful and conservative investment policy.

The Standard Formula SCR risk profile for AAUICL is dominated by its underwriting risk profile, quantitative measures and limits which are considered in making key business decisions. The material underwriting risk is significantly reduced through extensive quota share and excess of loss reinsurances.

AAUICL’s underwriting risk appetite is for the business to focus on well-known market segments in the UK motor and household markets, with distribution through the Group broker. The Company seeks to retain low levels of risk, which is reflected in its reinsurance arrangements.

AAUICL’s risk profile at 31 January 2026 is set out below:

Risk Category	2026 % of SCR	2025 % of SCR
Underwriting Risk	49.1%	50.1%
Market Risk	4.7%	4.1%
Counterparty (Credit) Risk	28.0%	25.7%
Operational Risk	18.1%	20.1%



C.1 Underwriting Risk

C.1.1 Material Risks

Underwriting risk is the risk of a change in value due to a deviation of the actual claims payments from the expected amount of claims payments (including expenses). This includes pricing uncertainty/risk selection, catastrophe risk, inappropriate reserving or other fluctuations in the timing, frequency and severity of insured events.

AAUICL distributes through AA Ltd Group distribution arrangements and underwrites personal lines motor, residential property and key insurance products. Policies are generally written for a 12-month term, after which AAUICL may renew on the same or revised terms, or may decline to renew.

This risk is comprised of both underwriting and reserving risk:

- High and Persistent Claims Inflation
- Deterioration in Technical Reserves

C.1.2 Material Risk Concentrations

AAUICL's largest class of business is motor insurance and it has some concentration risk. AAUICL also writes household insurance. Both are written across the whole of the UK geographic region, thus reducing the level of concentration and providing a level of risk diversification. In addition, ATE business further increases the level of diversification. The Directors therefore do not consider there to be any material underwriting risk concentration.

There are not anticipated to be any material underwriting risk concentrations over the business planning period.

C.1.3 Risk Mitigations

During the year, AAUICL mitigated underwriting risk through the purchase of reinsurance protection and the implementation of appropriate controls.

AAUICL purchases Excess of Loss (XoL) reinsurance on the motor business and Catastrophe (Cat) cover on the household business to protect against the impact of large individual or aggregated claims. In addition, the Company had in place Quota Share reinsurance and coinsurance arrangements to mitigate the impact of lower value, attritional losses on both motor and household business.

AAUICL further mitigates underwriting risk through the following:

- Regular actuarial analysis of claims data to review rates
- Review of monthly underwriting management information
- Regular review of claims performance KPIs
- Oversight and management of the claims handling
- Committee oversight of large claims
- Regular updates of the risk register, including reporting of any risk events
- Stress testing of loss ratios as part of the ORSA process

C.1.4 Stress and Sensitivity Testing

AAUICL conducts stress and sensitivity testing as part of the ORSA process, which is carried out at least annually. This considers stresses regarding premium volumes, future claims' performance and claims development on the existing business. As part of the most recent ORSA, multiple stress tests were run on historic reserves as well as the performance of future business and on premium volumes.

The stress tests demonstrated that, due to the reinsurance protection in place, AAUICL is resilient to these risks: with the SCR headroom being eroded, the absolute SCR continues to be met with a comfortable capital coverage ratio.

C.2 Market Risk

C.2.1 Material Risks

Market risk arises from changes in the income generated by investments or from changes in the value of such investments and includes:

- Interest rate risk
- Spread risk
- Equity risk
- Currency risk
- Property risk
- Concentration risk

C.2.2 Material Risk Concentrations

Concentration risk within AAUICL's investment portfolio was mitigated through J Safra Sarasin Bank, who invest small amounts in a diversified range of investments. AAUICL historically aimed to invest half of available cash in bonds but due to market uncertainty, this was reduced to 15%. The remaining balance is held in current accounts with Lloyds, Barclays, and a JP Morgan Money Market Fund. This risk is reflected in the SCR.

C.2.3 Risk Mitigations

The investment policy requires the credit quality of all investible assets to be in the range of AAA (MMFs) and to BBB+ (cash investments). To further minimise risk exposure, AAUICL currently holds assets at a minimum of A rated due to market uncertainty. Further control and mitigating actions are outlined as part of the investment policy.

The Investment Committee meets at least quarterly to review the portfolio position and underlying performance.

C.2.4 Prudent Person Principle

The Board has adopted a prudent approach to investment strategy, with the primary objective being the preservation of solvency capital.

C.2.5 Stress and Sensitivity Testing

Testing is undertaken as part of the annual ORSA as discussed and approved by the Board. Stress tests were performed considering changes in interest rates and market yield curves on the investment portfolio and the SCR. These demonstrated that AAUICL's SCR is not sensitive to the impact of changes in market conditions to the investment portfolio, and AAUICL does not expect there to be a material risk of the SCR ratio falling below 125% due to changes in market risk.

C.3 Credit Risk

C.3.1 Material Risks

Credit risk is the risk of the change in value due to actual credit losses deviating from expected credit losses due to the failure to meet contractual debt obligations. Credit risk can arise on issuers of securities (in the Company's investment portfolio), debtors, reinsurers and intermediaries to whom the Company has an exposure. These areas are tightly controlled.

The risk register identifies and records the actual, potential and emerging credit risks to which the Company is exposed. These risks are discussed on at least a six-monthly basis and their potential impact is assessed, thus enabling focus to be directed towards the areas of highest risk.

Reports against measures are provided to the relevant forums and, where appropriate, the Board on at least a quarterly basis.

C.3.2 Material Risk Concentrations

AAUICL's credit risk exposures during the year were diversified as set out below:

- Investible assets are split between banks and investments
- Reinsurance exposure is diversified between more than one counterparty
- AAUICL fund investments were diversified between counterparties
- Premium held by AAISL

However, while the Company distributes solely through the Group intermediary, it used several banking counterparties and a number of reinsurance partners during the year. Some level of risk concentration remains.

C.3.3 Risk Mitigations

AAUICL aims to mitigate exposure to credit risk through the implementation of appropriate controls. Key business controls include:

- No premiums to be overdue as per contract terms
- Reinsurance recoveries to be received promptly as per contract terms
- Collection from policyholders to be managed actively by AAISL
- Minimum rating for all reinsurance counterparties to be at least A- (as per Standard & Poor's or equivalent)
- Minimum rating for all coinsurance counterparties to be at least A- (as per Standard & Poor's or equivalent)
- Multiple reinsurance partners across both insurance products

C.3.4 Stress and Sensitivity Testing

As part of the ORSA process, credit risk is subject to stress, scenario, and sensitivity tests. These tests are intended to assess the likely impact of adverse situations on the Company's capital requirement. AAUICL depends, to a large extent, on its reinsurance programme in mitigating risk, and the risks of reinsurers suffering a credit downgrade or failing altogether are therefore stresses considered as part of the ORSA process.

Stress tests show that the extreme stress of a failure of the largest business partner would result in a shortfall below the SCR. However, due to the diversification of the reinsurance programme, and all reinsurance partners being highly rated, this scenario is expected to be highly remote. AAUICL is highly resilient to the other stresses, including credit downgrades.

C.4 Liquidity Risk

C.4.1 Material Risks

Managing the Company's liquidity is necessary to ensure that it can meet its liabilities as they fall due, whilst balancing this with achieving returns on the less liquid, invested assets.

The requirement for liquidity is balanced with the goal of achieving adequate investment returns while ensuring that additional funds are available should they be required. Investments during the year have largely been in highly liquid funds. It is the Board's policy that a further cash buffer should be held to allow for unexpected changes in anticipated cash. Specifically, AAUICL must ensure that it has sufficient funds to settle its liabilities as they fall due. Due to the premium and claims profile of AAUICL's non-life portfolio, liquidity risk is not considered material.

The investments held by AAUICL comprise:

- Funds at call with banks
- Investments in bonds

All investments are highly liquid and regularly traded. The nature, duration and liquidity of AAUICL's investments therefore allow the Company to meet its liabilities as they fall due and do not result in liquidity risk.

C.4.2 Material Risk Concentrations

There are no material liquidity risk concentrations.

C.4.3 Risk Mitigations

It is the Board's policy that an appropriate cash buffer should be held to allow for unexpected changes in anticipated cash flows.

The main risk mitigation is the balance in the investment portfolio, the fact that most assets are highly liquid and the close monitoring of the Company's cash position. Regular cash flow forecasts and monthly management accounts with comparisons against budget will assist in managing this risk.

C.4.4 Stress and Sensitivity Testing

As part of the ORSA process, liquidity risk is indirectly subject to stress, scenario, and sensitivity tests via other risk areas. These tests will reflect the cash flow impact of stresses, such as deteriorating loss ratios and lower business volumes, which in turn directly impact on both the SCR and the Solvency II free reserves.

C.5 Operational Risk

C.5.1 Material Risks

Operational risk arises from failed internal processes, procedures, or controls, from personnel or systems failures, from external events or from a failure to comply with legislation, regulations or other obligations. Reputational, strategic and Group risks have also been considered in this category.

AAUICL has identified the following key operational risks:

- Absent, incomplete, inaccurate or inadequate management information
- Accounting system/accuracy of financial reporting does not meet requirements
- Application fraud, criminal or fraudulent activity, malicious activity
- Loss of key member of Board or management team
- Management stretch
- Inaccurate or misstated financial accounts
- Sales and administration systems not fit for purpose
- Brand/reputational damage
- Loss of working environment (offices, IT, communications)
- Malicious acts – hacking, viruses, industrial espionage

AAUICL has in place strong risk management processes and procedures, supported by AA Ltd Group, which are proportional for the type of business and the size of the operation. Although many services are outsourced, the outsourced providers are commonly part of the wider AA Ltd Group and senior management is closely involved in all aspects of the operation.

Operational risks are identified, assessed and set out in AAUICL's risk register, along with appropriate controls. There is a process for regular reporting of risk events. The risk register is discussed on a regular basis by the ARCC and the Board, with input from all relevant functions and activities within the business.

C.5.2 Material Risk Concentrations

The main sources of operational risk currently facing AAUICL are IT systems and Third Party relationships.

C.5.3 Risk Mitigations

AAUICL has a strong internal control framework to mitigate operational risk. This encompasses the following key controls in managing operational risk:

- Data analysis checks
- Establishment of appropriate financial reporting systems
- Oversight of financial reporting
- Four-eyes authorisation and approval controls
- Segregation of duties
- Data checks, including between internal and external sources
- Reconciliations
- Monthly management accounts and comparisons against budget
- Appropriate checks on key personnel
- Oversight of service providers
- Complaints monitoring and reporting
- Appropriate Disaster Recovery and Business Continuity Plans
- Appropriate IT and system security controls

There are no anticipated changes in risk mitigations over the business planning period.

C.5.4 Stress and Sensitivity Testing

Operational risk is included in the Standard Formula, with an appropriate risk charge calculated. In addition, several operational risks would directly impact underwriting risk and are therefore also captured. As part of the ORSA process, AAUICL also considers those risks which may not be fully captured in the Standard Formula, the exposure to outsourced service providers and various reputational risks. These risks are managed through appropriate controls and other mitigating actions, such as close involvement of the Board in all key operational decisions.

C.6 Conduct Risk

AAUICL has no appetite for unfair customer outcomes and seeks to minimise conduct risk through ongoing monitoring of customer experience, claims and complaints. Material outsourced functions are subject to formal oversight and regular reporting to the Board. AAUICL also performs regular analysis of portfolio performance to support fair pricing and appropriate customer outcomes. Consumer Duty is embedded within the Company's governance framework and is reported to the Board.

C.7 Other Material Risks

The Board continues to monitor developments as they occur to ensure that actions are taken to mitigate any potential adverse impact as far as possible.

D. Valuation for Solvency Purposes

The valuation of assets and liabilities are the same for Generally Accepted Accounting Principles (IFRS) and Solvency II purposes, with the exception of:

- Differences in the valuation of technical provisions
- Differences in the valuation of reinsurance recoverables on technical provisions
- Removal of items which do not result in cash flows

The asset differences are summarised in the table below:

Description	2026		2025	
	Solvency II Value £'000	IFRS Value £'000	Solvency II Value £'000	IFRS Value £'000
Investments	111,607	111,372	99,436	99,245
Insurance and Intermediaries Receivables	-	118,872	-	108,550
Reinsurance Recoverable	228,873	316,998	187,371	275,194
Reinsurance Receivables	-	38,776	-	35,294
Cash and cash equivalents	1,856	1,856	1,479	1,479
Deferred Acquisition Costs	-	2,432	-	1,762
Trade Receivables	271	4,297	122	3,907
Other Assets	-	3,217	-	3,814

D.1 Assets

The following bases, methods and assumptions have been used in valuing each material class of assets of Solvency II purposes.

The material classes of assets, except for reinsurance technical provisions, are as set out in the table above.

D.1.1 Investments

At 31 January 2026, AAUICL held £13.9m (2025: £13.4m) in bonds excluding accrued interest, and £97.2m (2025: £85.6m) in short-term Money Market Funds (MMFs).

The bonds are actively traded and therefore have readily ascertainable market values and assets are valued at market value both for IFRS and for Solvency II, with no significant estimate or judgements being utilised. There has been no change in the valuation or recognition basis.

D.1.2 Insurance and Intermediaries Receivables

Insurance and intermediaries receivable items represent premiums owed to AAUICL from its distributor, net of commission and including IPT. Over 40% of premiums are paid by policyholders in instalments and AAUICL receives these on a "pay as paid" basis.

At the year end, the Company was owed £118.9m (2025: £108.6m) in premiums. Contracts with the broker set out payment terms and no amounts of premiums or recoveries have ever been overdue.

Premiums are valued at fair value, being the amounts recoverable, and as no amounts are overdue, there have been no significant estimates or judgements made in arriving at the valuation.

At year end, AAUICL had £38.8m (2025: £35.3m) of reinsurance receivables due under the Quota Share arrangement and representing the reinsurer's share of claims, profit and sliding commission outstanding. Settlements are made in arrears monthly.

The key estimate in deriving profit and sliding commission balances is the actuarial best estimate loss ratio, as these vary with the performance of the business.

While the assets are valued on a consistent basis both for IFRS and Solvency II, for Solvency II valuation purposes, such assets are set against technical provisions to the extent that they are not overdue. There has been no change in the valuation or recognition basis for such assets and these items are shown net of coinsurance.

D.1.3 Deposits, Cash and Cash Equivalents

At the year end, AAUICL held £1.9m (2025: £1.5m) in cash and cash equivalents with banking counterparties. All amounts are held in GBP and either in the UK or in Gibraltar. Deposits, cash and cash equivalents are valued at fair value, based on the actual balances held, and AAUICL receives monthly statements. The valuation of these assets is the same for IFRS and Solvency II, no estimates or judgements have been used, and there has been no change in the valuation or recognition basis.

D.1.4 Deferred Acquisition Costs

Deferred acquisition costs represent commission and similar expenses directly related to the acquisition of policies which are deferred over the period relating to the underlying unearned premiums. AAUICL is charged an acquisition cost by related companies: AATS in respect of pricing and underwriting services, and by AAISL (Broker) for marketing services.

At 31 January 2026 AAUICL had £2.4m (2025: £1.8m) of deferred acquisition costs in the IFRS balance sheet.

The Solvency II balance sheet is prepared based on best estimates of future cash flows. Deferred acquisition costs do not result in future cash flows and these amounts are therefore excluded from the Solvency II balance sheet.

D.1.5 Trade Receivables

This represents the net balance receivable from the coinsurance partner. For IFRS purposes this is included in premium receivables and coinsurance payables but is netted off for Solvency II reporting.

D.1.6 Other Assets

Other assets represent prepaid expenses and a Motor Insurance Database (MIB) deferral. Prepayments have not been given a Solvency II value as they will not result in future cash flows.

D.2. Technical Provisions

Technical Provisions represent the insurance liabilities as at the reporting date. AAUICL's gross and net Technical Provisions by business line are set out in the table below:

2026	Motor Liability	Other Motor	Property	Misc Financial Loss	Total
	£'000	£'000	£'000	£'000	£'000
Gross Best Estimate Technical Provisions	193,693	9,703	35,213	100	238,709
Risk Margin	2,121	34	457	0	2,611
Total Gross Technical Provisions	195,814	9,737	35,670	100	241,320
Reinsurance Recoverables	(163,913)	(28,435)	(36,525)	0	(228,873)
Net Technical Provisions	31,901	(18,698)	(856)	100	12,447

The comparative table for 31 January 2025 is shown below:

2025	Motor Liability	Other Motor	Property	Misc Financial Loss	Total
	£'000	£'000	£'000	£'000	£'000
Gross Best Estimate Technical Provisions	166,570	6,026	29,101	86	201,783
Risk Margin	2,094	0	420	0	2,514
Total Gross Technical Provisions	168,665	6,026	29,521	86	204,297
Reinsurance Recoverables	(145,378)	(12,042)	(29,952)	0	(187,371)
Net Technical Provisions	23,287	(6,016)	(431)	86	16,926

D.2.1 Bases, Methods and Assumptions

D.2.1.1 Best Estimate

The starting point for the valuation of technical provisions is the booked reserves - being the best estimate of claims costs at the year end. Earned claims are estimated with reference to standard reserving techniques. Unearned claims are estimated with reference to pricing loss ratios. Reasonable assumptions based on historic patterns are then applied to convert the best estimate to future cash flows.

D.2.1.2 Expenses

The cost of running off the existing insurance obligations is estimated on the basis that the Company will continue to write other business. This is based on the current levels of expenditure and takes due account of increasing activity across the business.

D.2.1.3 Events Not in Data

There may be possible future events which are not reflected in the historical data of the Company or the market. Such events are referred to as Events Not in Data (ENIDs). An allowance is made in the technical provisions where the impact of potentially negative ENIDs (i.e. events which increase reserves) is considered to be greater than the impact of potentially positive ENIDs (i.e. those which reduce reserves).

D.2.1.4 Bound but not Incepted

AAUICL may be contractually obligated to write certain business at the year end, although the risks will not incept until the following year. For example, renewal business for February will be invited prior to 31 January. An appropriate allowance has been made for bound but not incepted business as at the year end.

D.2.1.5 Discounting

Cash flows are discounted using the risk-free interest rate structure as provided monthly by European Insurance and Occupational Pensions Authority (EIOPA).

D.2.1.6 Risk Margin

In addition, a risk margin is calculated for Solvency II. This represents the margin that would have to be paid to a third party for them to take over and meet the insurance obligations of the Company. The risk margin has been calculated based on an approximation of the partial SCR for each future year.

D.2.1.7 Allocation to Lines of Business

For Solvency II purposes, motor business is required to be split into motor liability and other motor. The Company uses claims heads of damage to split its motor business into the Solvency II classes. Bodily injury and third-party property damage are allocated to motor liability, with accidental damage, windscreen, fire and theft being allocated to other motor. The Keycare business is allocated to Miscellaneous Financial Loss Solvency II class.

D.2.1.8 Reinsurance Recoverables

AAUICL has reinsurance recoverables arising from its Excess of Loss and Quota Share arrangements. Such items are calculated on a consistent basis with gross technical reserves, reflecting best estimates of both expired and unexpired risks. Amounts due from and payments due to reinsurers are included in the technical provision to the extent they are not overdue.

D.2.1.9 Simplifications

No material simplifications have been used in the calculation of technical provisions.

D.2.1.10 Uncertainty

Technical provisions require judgement and estimations and therefore contain an element of uncertainty. In addition, uncertainty in terms of methods, assumptions and results are volatile for an underwriter but are reducing as AAUICL continues to mature. Key areas of uncertainty in AAUICL's technical provisions are:

- Outstanding reserves: Reserves on reported claims are based on reasonable estimates, reflecting information known at the balance sheet date. Ultimate settlement of these claims may differ from estimates. While solvency is based on a 50:50 best estimate, the financial statements include a management buffer which reduces each year as we gain additional claims experience.
- Future losses: Future losses arise on both expired and unexpired risks and the estimation of these losses is based on actuarial assumptions. Such assumptions will take account of past performance and known or anticipated future changes and may ultimately prove to differ from actual experience.
- Volumes: As AAUICL continues to grow, volatility associated with low volumes is reducing and the Company is becoming more resilient to adverse movements.
- Other estimates: Technical provisions include assumptions as to expenses, events not in data and bound but not incepted risks. While these assumptions are prepared on a best estimate basis, reflecting historical experience where appropriate, they could ultimately prove to be inappropriate.
- Legislative and market factors: The UK motor market has been subject to material changes in the past, encompassing legislative, economic and behavioural changes. Similar changes in the future are difficult to predict but could ultimately impact best estimates and future cash flow.

AAUICL seeks to minimise the level of uncertainty through a robust process involving external actuarial advice. Claims performance is closely monitored and benchmarked against our peers to ensure that changes in trends are identified and appropriately reflected in future projections.

D.2.1.11 Differences between Solvency II and IFRS Valuation

The starting point for Solvency II valuation purposes are the IFRS reserves. AAUICL has transitioned to reporting on an IFRS 17 basis as at 31 January 2024. The earned reserves under IFRS 17 are on a discounted basis, and include explicit ENIDs and counterparty default assumptions, which is akin to the calculation of the Solvency II Claims Provision. Key difference between IFRS 17 and Solvency II valuation bases are:

- IFRS valuation of gross reserves include a risk adjustment calibrated to the 80th percentile. Solvency II valuation is required to be at best estimate and any management load is removed
- IFRS valuation includes unearned premium, being the premium which reflects the unexpired risk exposure. Under Solvency II, the unearned premium is replaced by future claims expected to arise on this unearned exposure
- IFRS reserves do not make allowance for bound but not incepted business
- IFRS reserves are discounted using a different discount rate to Solvency II (IFRS reserving discount rate uses an illiquidity premium assumption, Solvency II is risk free only)
- IFRS reserves are calculated without a risk margin
- Insurance and intermediary's receivables are set against total gross technical provisions for Solvency II valuation purposes, to the extent that they are not overdue, while they are shown as a separate item on the balance sheet for IFRS reporting
- Reinsurance receivables and payables are set against technical provision reinsurance recoverables for Solvency II valuation purposes, to the extent that they are not overdue, while they are shown as separate items on the balance sheet for IFRS reporting

The following table shows the movement from IFRS 17 technical provisions to Solvency II technical provisions:

2026	Gross Technical Reserves £'000	Reinsurance Recoverables £'000	Total £'000
IFRS Reserves	385,983	316,419	69,564
Remove Risk Adjustment	(13,122)	(10,667)	(2,455)
Remove Unearned Premium	(142,843)	(116,998)	(25,845)
Reserves for Unexpired Risks	133,156	100,289	32,866
Receivables/Payables	(117,391)	(53,727)	(63,664)
Effect of Discounting on Unexpired Risks	(7,749)	(6,679)	(1,069)
Other Adjustments (e.g. change in yield curve on claims provision)	676	238	439
Risk Margin	2,611	-	2,611
Solvency II Technical Provisions	241,320	228,873	12,447

The comparative table for 31 January 2025 for IFRS 17 technical provisions to Solvency II technical provisions is shown below:

2025	Gross Technical Reserves £'000	Reinsurance Recoverables £'000	Total £'000
IFRS Reserves	341,521	275,194	66,327
Remove Risk Adjustment	(8,555)	(6,899)	(1,657)
Remove Unearned Premium	(146,331)	(120,181)	(26,149)
Reserves for Unexpired Risks	128,702	96,727	31,974
Receivables/Payables	(106,546)	(51,598)	(54,948)
Effect of Discounting on Unexpired Risks	(8,114)	(7,006)	(1,108)
Other Adjustments (e.g. change in yield curve on claims provision)	1,107	1,134	(28)
Risk Margin	2,514	-	2,514
Solvency II Technical Provisions	204,297	187,371	16,926

D.2.1.12 Transitional Adjustments

AAUICL has not used any transitional adjustments regarding the matching adjustment, volatility adjustment, transitional risk-free interest rate term structure or transitional deduction.

D.2.1.13 Changes over the Period

There have not been any material changes over the period.

D.3 Other Liabilities

The following bases, methods and assumptions have been used in valuing each material class of liabilities for Solvency II purposes.

The material classes of liabilities at the year end, except for gross technical provisions, are as set out in the table below:

	2026		2025	
	Solvency II Value £'000	IFRS Value £'000	Solvency II Value £'000	IFRS Value £'000
Insurance & Intermediaries payables	(3)	1,782	98	(92)
Reinsurance payables	-	89,454	-	83,411
Payables (trade, not insurance)	8,382	9,355	6,988	10,637
Deferred reinsurance commission	-	11,231	-	12,220

D.3.1 Reinsurance Payables

At year end, AAUICL had £89.4m (2025: £83.4m) of reinsurance payables, being net payments outstanding under the Quota Share arrangements and representing the reinsurers' share of premiums and commission which has not yet been settled. These amounts are valued at fair value, being the actual amounts payable. Settlements are made in arrears monthly.

There is no difference in the underlying valuation for IFRS and Solvency II and there have been no changes in the valuation or recognition basis. However, for Solvency II purposes these items, to the extent they are not considered overdue, are set against technical provisions reinsurance recoverables, whereas under IFRS they are shown separately on the balance sheet.

D.3.2 Payables (trade, not insurance)

The balance of £9.3m (2025: £10.6m) represents amounts owed to the coinsurance partner, taxes, accruals and other amounts payable. These are valued at fair value, being the actual amount due for settlement and there are no differences in valuation for IFRS and Solvency II purposes, except that the coinsurance creditor has been netted against premium debtors owed to the coinsurance partner.

D.3.3 Deferred Commission

AAUICL receives commission from its partners under the Quota Share and coinsurance arrangements. This is earned in line with the underlying premium, the commission relating to premium unearned at the reporting date is deferred to future periods. At 31 January 2026, AAUICL had a total of £11.2m (2025: £12.2m) deferred commission.

The Solvency II balance sheet is prepared based on best estimates of future cash flows. Deferred co-insurance and reinsurance commissions do not result in future cash flows and these amounts are therefore excluded from the Solvency II balance sheet.

E. Capital Management

E.1 Own Funds

E.1.1 Management of Own Funds

E.1.1.1 Objectives, Policies and Processes in Managing Own Funds

AAUICL has in place a capital management process to ensure that the Company has the appropriate levels and quality of capital to meet both the SCR and the internal view of capital as determined by the ORSA. The intention is for capital requirements to be met in both the immediate and medium-term future.

Whilst AAUICL's ORSA process is conducted formally on an annual basis, the capital requirements and own funds to meet these requirements are considered at least quarterly as part of the quarterly regulatory reporting process and as part of all strategy discussions. Additionally, capital requirements are also considered as part of the budgeting and forecasting process. The ARCC and the Board discuss the Company's capital position at all meetings as part of their risk management processes and monitor ongoing performance through monthly management accounts.

There have been no changes in capital management processes during the period.

E.1.1.2 Time Horizon for Business Planning and Material Changes

AAUICL's business planning period for capital management encompasses a three-year time horizon, with emphasis on the current and next year. Given the unpredictability and historic volatility of the UK motor market, a longer time horizon would not be realistic. There have been no changes in the planning time horizon over the year.

E.1.2 Description of Own Funds

E.1.2.1 Structure, Amount and Quality of Own Funds

AAUICL currently only has basic own funds and no ancillary own funds. Own funds are comprised entirely of Share Capital and the Reconciliation Reserve and therefore all qualify as Tier 1 funds.

The table below set out AAUICL's own funds at 31 January 2026, together with movements during the period:

2026	Share capital £'000	Reconciliation reserve £'000	Total Own Funds £'000
At 1 February 2025	28,800	48,225	77,025
Capital Injections during the Period	-	-	-
Movement in the Reconciliation Reserve	-	15,883	15,883
At 31 January 2026	28,800	64,108	92,908

The comparative table for 31 January 2025 is shown below:

2025	Share capital £,000	Reconciliation reserve £,000	Total Own Funds £,000
At 1 February 2024	28,800	33,069	61,869
Capital Injections during the Period	-	-	-
Movement in the Reconciliation Reserve	-	15,156	15,156
At 31 January 2025	28,800	48,225	77,025

We have observed increases in own funds over the year as a result of better than expected profits on business sold in 2023 and 2024 calendar years, in addition to profit commissions.

The Company's Reconciliation Reserve effectively represents retained earnings on a Solvency II valuation basis.

E.1.2.2 Terms and Conditions of Own Funds

AAUICL's own funds are fully comprised of Tier 1 funds and have no terms or conditions attached and there are no restrictions affecting the availability and transferability of the Company's own funds. The own funds are not redeemable and do not carry any guaranteed dividend or other return.

E.1.2.3 Difference in Own Funds between Financial Statements and Solvency II Valuation

The difference in the valuation of own funds as shown in the Financial Statements compared to the Solvency II valuation is due to the valuation differences in the underlying assets and liabilities, as set out in the table below:

	2026 £'000	2025 £'000
Own Funds per Financial Statements	99,417	81,723
Difference in Valuation of net Technical Provisions	(8,069)	(7,170)
Removal of Deferred Acquisitions Costs	(4,023)	(4,172)
Removal of Other Deferred Costs	(5,408)	(5,373)
Removal of Prepayments	(241)	(203)
Removal of Deferred Commissions	11,231	12,220
Deferred Tax Liability	-	-
Own Funds per Solvency II Valuation	92,908	77,025

E.2 Solvency Capital Requirement and Minimum Capital Requirement

The standard dependencies, as set out by EIOPA, between the risks covered by the risk modules and sub-modules of the Standard Formula have been used in the Mazar's Horizon model, which is the tool used by AAUICL to calculate the SCR and the MCR.

E.2.1 SCR and MCR

AAUICL's SCR and MCR coverage is set out below:

	2026 £'000	2025 £'000
Own funds	92,908	77,025
Solvency Capital Requirements	43,521	44,163
SCR Coverage	213.5%	174.4%
Minimum Capital Requirement	10,880	11,041
MCR Coverage	853.9%	697.6%

All capital is Tier 1 and therefore fully eligible to cover the SCR and MCR, and the Company complied with both the SCR and the MCR throughout the year.

E.2.2 SCR by Risk Module

The table below sets out the risk module components of AAUICL's SCR. This demonstrates that, in line with the Company's business model, non-life underwriting risk and counterparty risk are the two largest elements of the capital requirement.

	2026	2025
	£'000	£'000
Market Risk	2,360	2,049
Counterparty (Credit) Risk	13,987	12,872
Non-Life Underwriting Risk	24,507	25,086
Diversification	(6,358)	(5,934)
Basic SCR	34,496	34,073
Operational Risk	9,025	10,090
SCR	43,521	44,163

E.2.3 Simplifications

No simplified calculations have been used in applying the standard model and no undertaking specific parameters have been used.

E.2.4 Inputs used to Calculate the MCR

The following inputs have been used to calculate the Company's MCR:

2026	Net (of reinsurance) best estimate technical provisions £'000	Net (of reinsurance) written premiums in the last 12 months £'000
Motor Vehicle Liability	29,780	27,926
Motor Vehicle Other	-	14,307
Property	-	19,242
Misc Financial Losses	100	2,690
Linear MCR		8,019
SCR		43,521
Combined MCR		10,880
Absolute Floor of the MCR		3,500
Minimum Capital Requirement		10,880

The comparative inputs for 31 January 2025 are as below:

2025	Net (of reinsurance) best estimate technical provisions £'000	Net (of reinsurance) written premiums in the last 12 months £'000
Motor Vehicle Liability	21,193	30,111
Motor Vehicle Other	-	16,248
Property	-	16,262
Misc Financial Losses		1,154
Linear MCR		7,234
SCR		44,163
Combined MCR		11,041
Absolute Floor of the MCR		3,500
Minimum Capital Requirement		11,041

E.2.5 Changes over the Period

The Company's SCR reduced during the year, driven by a combination of a higher ceded quota share proportion on the motor portfolio, combined with recent decreases in average premium, in response to the softening market. Non-Life Underwriting Risk has also increased, this is primarily due to changes in deductibles across motor and home excess of loss reinsurance programmes. The solvency ratio has increased over the year, driven by own fund increases as a result of better than expected profits on business sold in 2023 and 2024, in addition to profit commissions.

F. Responsibility Statement

The Directors are responsible for preparing the SFCR in accordance with the Financial Services (Insurance Companies) Regulations 2020 and applicable Solvency II Regulations (SII), as modified by relevant supervisory modifications, and as supplemented by supervisory approvals and determinations ('the relevant legal requirements').

Each of the Directors, whose names are listed in the Board of Directors section of the Company's Annual Report & Accounts, confirm that, to the best of their knowledge:

a) throughout the financial year in question, the Company has complied in all material respects with all relevant legal requirements; and

b) it is reasonable to believe that, at the date of the publication of the SFCR, the Company has continued to comply and will continue to comply in future.

By Order of the Board



.....
Valentina Skachkova (Director)

Date: 15 May 2026

G. Annual Quantitative Reporting Templates

IR.02.01.02

Balance sheet

Quarterly solo and group, disclosure solo and group

		Solvency II value
		C0010
Assets		
Goodwill	R0010	
Deferred acquisition costs	R0020	
Intangible assets	R0030	
Deferred tax assets	R0040	
Pension benefit surplus	R0050	
Property, plant & equipment held for own use	R0060	
Investments (other than assets held for index-linked and unit-linked	R0070	111,607
Property (other than for own use)	R0080	235
Holdings in related undertakings, including participations	R0090	
Equities	R0100	
Equities - listed	R0110	
Equities - unlisted	R0120	
Bonds	R0130	14,122
Government Bonds	R0140	2,944
Corporate Bonds	R0150	11,179
Structured notes	R0160	
Collateralised securities	R0170	
Collective Investments Undertakings	R0180	97,250
Derivatives	R0190	
Deposits other than cash equivalents	R0200	
Other investments	R0210	
Assets held for index-linked and unit-linked contracts	R0220	
Loans and mortgages	R0230	
Loans on policies	R0240	
Loans and mortgages to individuals	R0250	
Other loans and mortgages	R0260	
Reinsurance recoverables from:	R0270	228,873
Non-life and health similar to non-life	R0280	228,873
Life and health similar to life, excluding index-linked and unit-linked	R0315	
Life index-linked and unit-linked	R0340	
Deposits to cedants	R0350	
Insurance and intermediaries receivables	R0360	500
Reinsurance receivables	R0370	
Receivables (trade, not insurance)	R0380	-229
Own shares (held directly)	R0390	
Amounts due in respect of own fund items or initial fund called up but not	R0400	
Cash and cash equivalents	R0410	1,856
Any other assets, not elsewhere shown	R0420	
Total assets	R0500	342,607
Liabilities		
Technical provisions - total	R0505	241,320
Technical provisions - non-life	R0510	241,320
Technical provisions - life	R0515	
Best estimate - total	R0542	238,709
Best estimate - non-life	R0544	238,709
Best estimate - life	R0546	
Risk margin - total	R0552	2,611
Risk margin - non-life	R0554	2,611
Risk margin - life	R0556	
Transitional (TMTP) - life	R0565	
Other technical provisions	R0730	
Contingent liabilities	R0740	
Provisions other than technical provisions	R0750	

Pension benefit obligations	R0760	
Deposits from reinsurers	R0770	
Deferred tax liabilities	R0780	
Derivatives	R0790	
Debts owed to credit institutions	R0800	
Financial liabilities other than debts owed to credit institutions	R0810	
Insurance & intermediaries payables	R0820	-3
Reinsurance payables	R0830	
Payables (trade, not insurance)	R0840	8,382
Subordinated liabilities	R0850	
Subordinated liabilities not in Basic Own Funds	R0860	
Subordinated liabilities in Basic Own Funds	R0870	
Any other liabilities, not elsewhere shown	R0880	
Total liabilities	R0900	249,699
Excess of assets over liabilities	R1000	92,908

IR.05.02.01

Premiums, claims and expenses by country
Annual solo, group and branch, disclosure solo and

		Home country	Home Country - non-life obligations Top 5 countries (by amount of gross premiums written) - non-life obligations					Total Top 5 and home country
		C0080	C0090	C0090	C0090	C0090	C0090	C0140
Country	R0010		GB					
Premiums written								
Gross - Direct Business	R0110		284,238					284,238
Gross - Proportional reinsurance accepted	R0120							
Gross - Non-proportional reinsurance accepted	R0130							
Reinsurers' share	R0140		233,689					233,689
Net	R0200		50,549					50,549
Premiums earned								
Gross - Direct Business	R0210		287,805					287,805
Gross - Proportional reinsurance accepted	R0220							
Gross - Non-proportional reinsurance accepted	R0230							
Reinsurers' share	R0240		236,847					236,847
Net	R0300		50,958					50,958
Claims incurred								
Gross - Direct Business	R0310		214,306					214,306
Gross - Proportional reinsurance accepted	R0320							
Gross - Non-proportional reinsurance accepted	R0330							
Reinsurers' share	R0340		177,381					177,381
Net	R0400		36,925					36,925
Net expenses incurred	R0550		10,485					10,485

		Home country	Home Country - life obligations Top 5 countries (by amount of gross premiums written) - life obligations					Total Top 5 and home
		C0220	C0230	C0230	C0230	C0230	C0230	C0280
Country	R1400							
Premiums written								
Gross	R1410							
Reinsurers' share	R1420							
Net	R1500							
Premiums earned								
Gross	R1510							
Reinsurers' share	R1520							
Net	R1600							
Claims incurred								
Gross	R1610							
Reinsurers' share	R1620							
Net	R1700							
Net expenses incurred	R1900							

IR.05.04.02

Non-life income and expenditure

Annual group, quarterly solo, group and branch, disclosure solo, disclosure group

IR.05.04.02.01

Non-life income and expenditure : reporting period

			All non-life business (ie excluding annuities stemming from accepted insurance and reinsurance contracts)	Motor vehicle liability insurance - personal lines - (line of business 4)	Motor vehicle other motor insurance - personal lines - (line of business 5)	Fire and other damage to property insurance - personal lines - (Line of business 7)	Miscellaneous financial loss (Lines of business 12 and 24)
		CO010	C0015	C0140	C0150	C0170	C0260
Income							
Premiums written							
Gross written premiums	R0110		284,238	157,507	81,375	42,666	2,690
Gross written premiums - insurance (direct)	R0111		284,238	157,507	81,375	42,666	2,690
Gross written premiums - accepted reinsurance	R0113						
Net written premiums	R0160		50,549	26,032	14,007	7,820	2,690
Premiums earned and provision for unearned							
Gross earned premiums	R0210		287,805	161,595	83,433	40,568	2,208
Net earned premiums	R0220		50,958	26,923	14,427	7,400	2,208
Expenditure							
Claims incurred							
Gross (undiscounted) claims incurred	R0610		214,306	116,024	59,669	36,444	2,170
Gross (undiscounted) direct business	R0611		214,306	116,024	59,669	36,444	2,170
Gross (undiscounted) reinsurance accepted	R0612						
Net (undiscounted) claims incurred	R0690		36,925	19,807	7,519	7,428	2,170
Net (discounted) claims incurred	R0730	36,925	36,925				
Analysis of expenses incurred							
Technical expenses incurred net of reinsurance ceded	R0910	10,485					
Acquisition costs, commissions, claims management costs	R0985	-10,296	-10,296	-7,184	-1,151	-1,961	
Other expenditure							
Other expenses	R1140	1,870					
Total expenditure* (Total expenditure presented on IR.05.04.02.01 includes other non-technical expense line items that are not separately disclosed in the table)	R1310	52,442*					

IR.17.01.02

Non-life technical provisions - Quarterly solo and branch, disclosure solo

		Direct business and accepted proportional reinsurance											Accepted non-proportional reinsurance				Total Non-Life obligation	
		Medical expense insurance	Income protection insurance	Workers' compensation insurance	Motor vehicle liability insurance	Other motor insurance	Marine, aviation and transport	Fire and other damage to property insurance	General liability insurance	Credit and suretyship insurance	Legal expenses insurance	Assistance	Misc financial loss	Non-proportional health reinsurance	Non-proportional casualty reinsurance	Non-proportional marine, aviation and transport		Non-proportional property reinsurance
		C0020	C0030	C0040	C0050	C0060	C0070	C0080	C0090	C0100	C0110	C0120	C0130	C0140	C0150	C0160		C0170
Best estimate																		
<i>Premium provisions</i>																		
Gross	R0060	0	0	0	16,433	10,997	0	3,663	0	0	0	0	100	0	0	0	0	31,193
Total recoverable from reinsurance/SPV and Finite Re after the adjustment for expected losses due to counterparty default	R0140	0	0	0	14,994	24,419	0	9,989	0	0	0	0		0	0	0	0	49,401
Net Best Estimate of Premium Provisions	R0150	0	0	0	1,440	-13,422	0	-6,326	0	0	0	0	100	0	0	0	0	-18,208
<i>Claims provisions</i>																		
Gross	R0160	0	0	0	177,260	-1,294	0	31,550	0	0	0	0		0	0	0	0	207,516
Total recoverable from reinsurance/SPV and Finite Re after the adjustment for expected losses due to counterparty default	R0240	0	0	0	148,919	4,016	0	26,537	0	0	0	0		0	0	0	0	179,472
Net Best Estimate of Claims Provisions	R0250	0	0	0	28,340	-5,310	0	5,013	0	0	0	0		0	0	0	0	28,044
Total Best estimate - gross	R0260	0	0	0	193,693	9,703	0	35,213	0	0	0	0	100	0	0	0	0	238,709
Total Best estimate - net	R0270	0	0	0	29,780	-18,732	0	-1,313	0	0	0	0	100	0	0	0	0	9,836
Risk margin	R0280	0	0	0	2,121	34	0	457	0	0	0	0		0	0	0	0	2,611
Technical provisions - total (best estimate plus risk margin)																		
Technical provisions - total	R0320	0	0	0	195,814	9,737	0	35,670	0	0	0	0	100	0	0	0	0	241,320
Recoverable from reinsurance contract/SPV and Finite Re after the adjustment for expected losses due to counterparty default - total	R0330	0	0	0	163,913	28,435	0	36,525	0	0	0	0		0	0	0	0	228,873
Technical provisions minus recoverables from reinsurance/SPV and Finite Re - total	R0340	0	0	0	31,901	-18,698	0	-856	0	0	0	0	100	0	0	0	0	12,447

IR.19.01.21
Non-life insurance claims
Disclosure solo

Accident year /
 Underwriting
 year

Z0020	Accident year [AY]
-------	-----------------------

Gross Claims Paid (non-cumulative) - Development year. Total Non-Life Business

			1	2	3	4	5	6	7	8	9	10 & +
		C0010	C0020	C0030	C0040	C0050	C0060	C0070	C0080	C0090	C0100	C0110
Prior	R0100											
N-9	R0160	2,531	3,068	786	1,122	7,309	204	4	4	10	1	
N-8	R0170	18,295	3,310	1,400	1,481	919	521	70	55	112		
N-7	R0180	12,203	5,569	1,821	976	858	867	319	174			
N-6	R0190	31,285	10,486	8,824	2,002	2,526	828	263				
N-5	R0200	35,037	12,965	3,487	2,523	2,311	2,008					
N-4	R0210	51,106	22,531	5,997	5,636	8,249						
N-3	R0220	77,903	42,824	16,111	9,194							
N-2	R0230	94,752	39,389	12,243								
N-1	R0240	104,594	36,975									
N	R0250	106,286										

		In Current year	Sum of years (cumulative)
		C0170	C0180
Prior	R0100		
N-9	R0160	1	15,040
N-8	R0170	112	26,163
N-7	R0180	174	22,787
N-6	R0190	263	56,214
N-5	R0200	2,008	58,331
N-4	R0210	8,249	93,519
N-3	R0220	9,194	146,032
N-2	R0230	12,243	146,385
N-1	R0240	36,975	141,569
N	R0250	106,286	106,286
Total	R0260	175,507	812,326

**Gross undiscounted Best Estimate Claims Provisions - Development year.
Total Non-Life Business**

			1	2	3	4	5	6	7	8	9	10 & +
		C0200	C0210	C0220	C0230	C0240	C0250	C0260	C0270	C0280	C0290	C0300
Prior	R0100											
N-9	R0160									0	0	
N-8	R0170								-215	-75		
N-7	R0180							678	460			
N-6	R0190						1,022	545				
N-5	R0200					3,217	1,555					
N-4	R0210				21,478	3,862						
N-3	R0220			27,082	18,097							
N-2	R0230		43,710	35,750								
N-1	R0240	86,688	62,453									
N	R0250	101,145										

		Year-end (discounted data)
		C0360
Prior	R0100	
N-9	R0160	0
N-8	R0170	-75
N-7	R0180	457
N-6	R0190	522
N-5	R0200	1,495
N-4	R0210	3,709
N-3	R0220	17,280
N-2	R0230	33,537
N-1	R0240	57,785
N	R0250	92,805
Total	R0260	207,516

		Gross earned premium at reporting reference date	Estimate of future gross earned premium
		C0570	C0580
Prior	R0100		
N-9	R0160	8,888	
N-8	R0170	37,272	
N-7	R0180	31,106	
N-6	R0190	68,127	
N-5	R0200	114,737	
N-4	R0210	139,233	
N-3	R0220	168,220	
N-2	R0230	216,679	
N-1	R0240	291,551	
N	R0250	287,606	

IR.23.01.01

Own funds

Annual and quarterly solo, disclosure solo

		Total	Tier 1 -	Tier 1 -	Tier 2	Tier 3
		C0010	C0020	C0030	C0040	C0050
Basic own funds						
Ordinary share capital (gross of own shares)	R0010	28,800	28,800			
Share premium account related to ordinary share capital	R0030					
Initial funds, members' contributions or the equivalent basic own - fund item for mutual and mutual-type undertakings	R0040					
Subordinated mutual member accounts	R0050					
Surplus funds	R0070					
Preference shares	R0090					
Share premium account related to preference shares	R0110					
Reconciliation reserve	R0130	64,108	64,108			
Subordinated liabilities	R0140					
An amount equal to the value of net deferred tax assets	R0160					
Other own fund items approved by the supervisory authority as basic own funds not specified above	R0180					
Own funds from the financial statements that should not be						
Own funds from the financial statements that should not be represented by the reconciliation reserve and do not meet the criteria to be classified as Solvency II own funds	R0220					
Total basic own funds	R0290	92,908	92,908			
Ancillary own funds						
Unpaid and uncalled ordinary share capital callable on demand	R0300					
Unpaid and uncalled initial funds, members' contributions or the equivalent basic own fund item for mutual and mutual - type undertakings, callable on demand	R0310					
Unpaid and uncalled preference shares callable on demand	R0320					
A legally binding commitment to subscribe and pay for subordinated liabilities on demand	R0330					
Letters of credit and guarantees	R0340					
Letters of credit and guarantees other	R0350					
Supplementary members calls	R0360					
Supplementary members calls - other	R0370					
Other ancillary own funds	R0390					
Total ancillary own funds	R0400					
Available and eligible own funds						
Total available own funds to meet the SCR	R0500	92,908	92,908			
Total available own funds to meet the MCR	R0510	92,908	92,908			
Total eligible own funds to meet the SCR	R0540	92,908	92,908			
Total eligible own funds to meet the MCR	R0550	92,908	92,908			
SCR	R0580	43,521				
MCR	R0600	10,880				
Ratio of Eligible own funds to SCR	R0620	213.48%				
Ratio of Eligible own funds to MCR	R0640	853.91%				

IR.23.01.01.02**Reconciliation reserve**

		C0060
Reconciliation reserve		
Excess of assets over liabilities	R0700	92,908
Own shares (held directly and indirectly)	R0710	
Foreseeable dividends, distributions and charges	R0720	
Deductions for participations in financial and credit institutions	R0725	
Other basic own fund items	R0730	28,800
Adjustment for restricted own fund items in respect of matching adjustment portfolios and ring fenced funds	R0740	
Reconciliation reserve	R0760	64,108

IR.25.04.21
Solvency Capital Requirement
Disclosure solo

Net of loss-absorbing capacity of technical provisions		C0010
Market risk	R0140	2,360
Interest rate risk	R0070	1,354
Equity risk	R0080	
Property risk	R0090	59
Spread risk	R0100	1,901
Concentration risk	R0110	87
Currency risk	R0120	
Other market risk	R0125	
Diversification within market risk	R0130	-1,041
Counterparty default risk	R0180	13,987
Type 1 exposures	R0150	7,211
Type 2 exposures	R0160	7,740
Other counterparty risk	R0165	
Diversification within counterparty default risk	R0170	-964
Life underwriting risk	R0270	
Mortality risk	R0190	
Longevity risk	R0200	
Disability-Morbidity risk	R0210	
Life-expense risk	R0220	
Revision risk	R0230	
Lapse risk	R0240	
Life catastrophe risk	R0250	
Other life underwriting risk	R0255	
Diversification within life underwriting risk	R0260	
Total health underwriting risk	R0320	
Health SLT risk	R0280	
Health non SLT risk	R0290	
Health catastrophe risk	R0300	
Other health underwriting risk	R0305	
Diversification within health underwriting risk	R0310	
Non-life underwriting risk	R0370	24,507
Non-life premium and reserve risk (ex-catastrophe risk)	R0330	20,642
Non-life catastrophe risk	R0340	9,021
Lapse risk	R0350	161
Other non-life underwriting risk	R0355	
Diversification within non-life underwriting risk	R0360	-5,317
Intangible asset risk	R0400	
Operational and other risks	R0430	9,025
Operational risk	R0422	9,025
Other risks	R0424	
Total before all diversification	R0432	57,201
Total before diversification between risk modules	R0434	49,879
Diversification between risk modules	R0436	-6,358
Total after diversification	R0438	43,521
Loss-absorbing capacity of technical provisions	R0440	
Loss-absorbing capacity of deferred taxes	R0450	
Other adjustments	R0455	
Solvency capital requirement including undisclosed capital add-on	R0460	43,521
Disclosed capital add-on - excluding residual model limitation	R0472	
Disclosed capital add-on - residual model limitation	R0474	
Solvency capital requirement including capital add-on	R0480	43,521
Biting interest rate scenario	R0490	Increase
Biting life lapse scenario	R0495	

IR.28.01.01

**Minimum Capital Requirement - Only life or only non-life activity
Annual solo , disclosure solo**

		C0010
MCRNL Result	R0010	8,019

		Background information	
		Net (of reinsurance/SPV) best estimate and TP calculated as a whole	Net (of reinsurance) written premiums in the last 12 months
		C0020	C0030
Medical expense insurance and proportional reinsurance	R0020		
Income protection insurance and proportional reinsurance	R0030		
Workers' compensation insurance and proportional reinsurance	R0040		
Motor vehicle liability insurance and proportional reinsurance	R0050	29,780	27,926
Other motor insurance and proportional reinsurance	R0060		14,307
Marine, aviation and transport insurance and proportional reinsurance	R0070		
Fire and other damage to property insurance and proportional reinsurance	R0080		19,242
General liability insurance and proportional reinsurance	R0090		
Credit and suretyship insurance and proportional reinsurance	R0100		
Legal expenses insurance and proportional reinsurance	R0110		
Assistance and proportional reinsurance	R0120		
Miscellaneous financial loss insurance and proportional reinsurance	R0130	100	2,690
Non-proportional health reinsurance	R0140		
Non-proportional casualty reinsurance	R0150		
Non-proportional marine, aviation and transport reinsurance	R0160		
Non-proportional property reinsurance	R0170		

Linear formula component for life insurance and reinsurance obligations

		C0040
MCR Result	R0200	

Total capital at risk for all life (re)insurance obligations

		Net (of reinsurance/SPV) best estimate and TP calculated as a whole	Net (of reinsurance/SPV) total capital at risk
		C0050	C0060
Obligations with profit participation - guaranteed benefits	R0210		
Obligations with profit participation - future discretionary benefits	R0220		
Index-linked and unit-linked insurance obligations	R0230		
Other life (re)insurance and health (re)insurance obligations	R0240		
Total capital at risk for all life (re)insurance obligations	R0250		

Overall MCR calculation

		C0070
Linear MCR	R0300	8,019
SCR	R0310	43,521
MCR cap	R0320	19,585
MCR floor	R0330	10,880
Combined MCR	R0340	10,880
Absolute floor of the MCR	R0350	3,500
Minimum Capital Requirement	R0400	10,880